

# Appleton-Whittell Christmas Bird Count

January 02, 2026

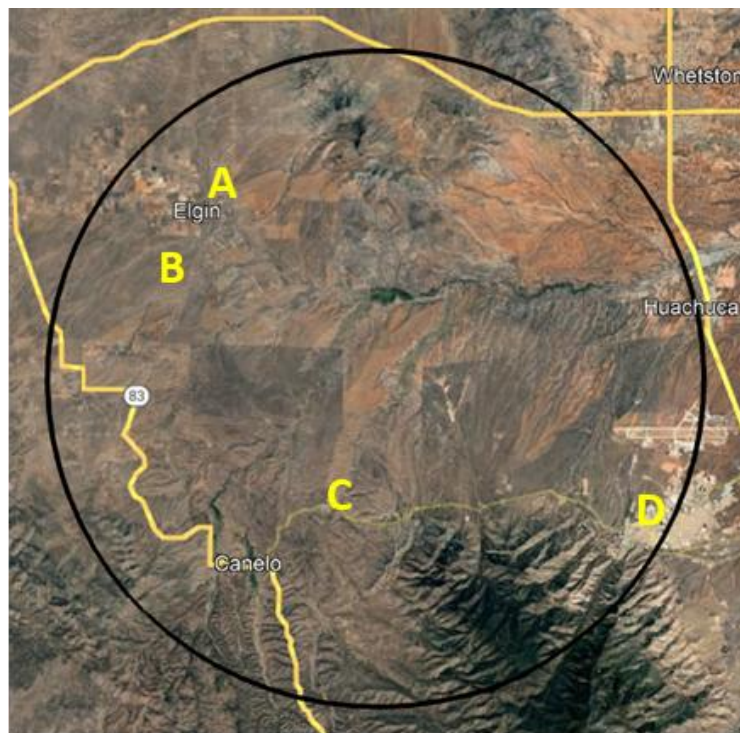
## Making Community Science Accessible

Each year in early January, volunteers head into the field to participate in the annual Appleton-Whittell Christmas Bird Count (CBC). Our contribution to the national Christmas Bird Count effort, the oldest community science project in North America, this count includes the towns of Sonoita, Elgin, and Canelo, pieces of the Huachuca Mountains and Canelo Hills, and of course the Research Ranch itself.

By counting each year at the same time, participants gather valuable data that help us track bird populations trends and inform our conservation efforts.

While much of the count area is rugged and remote, there are also opportunities for people with disabilities and those who may be uncomfortable so far afield. Accessible options include both feeder-watch stations and area searches, and the data collected are as valuable as those from the most far-flung locations.

The Appleton-Whittell CBC is open to everyone, regardless of physical or birding ability. **To sign up or learn more, reach out at [researchranch@audubon.org](mailto:researchranch@audubon.org).**



The Appleton-Whittell CBC Count Circle.  
Map: Audubon Southwest.

## Accessible Birding Locations

- A)** Elgin Winery (471 Elgin Rd, Elgin, AZ 85611)
- B)** Sonoita Vinyards (290 Elgin Canelo Rd, Elgin, AZ 85611)
- C)** Elgin "Not a Park" Park (Cimarron Road and Woodland, Elgin, AZ 85611)
- D)** Ft. Huachuca Park Area (Smith Avenue and Hatfield Street, Fort Huachuca, AZ 85613)

Learn more about the Christmas Bird Count

<https://www.audubon.org/community-science/christmas-bird-count>